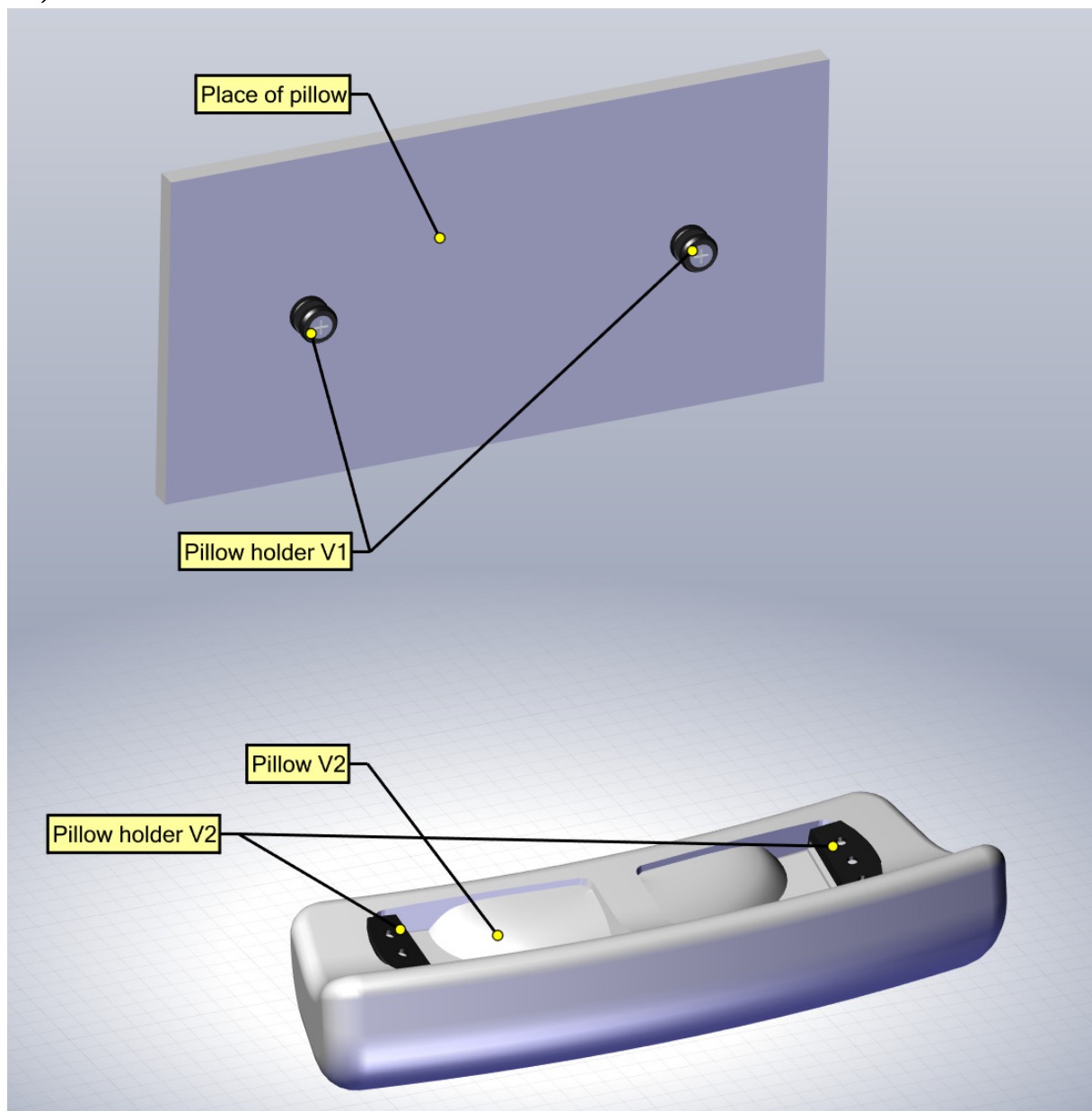


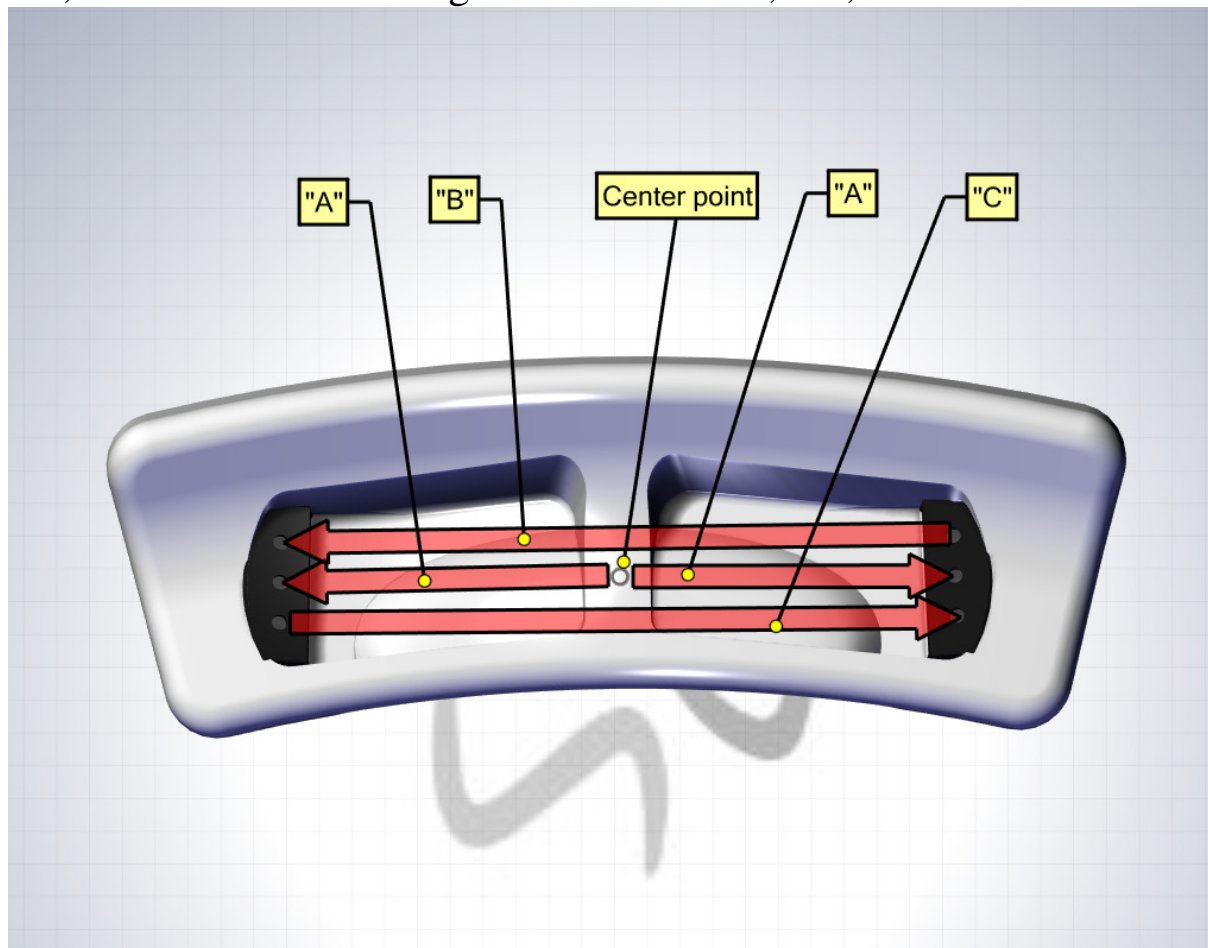
Changing of pillow holder V1-V2

1; Bill of material

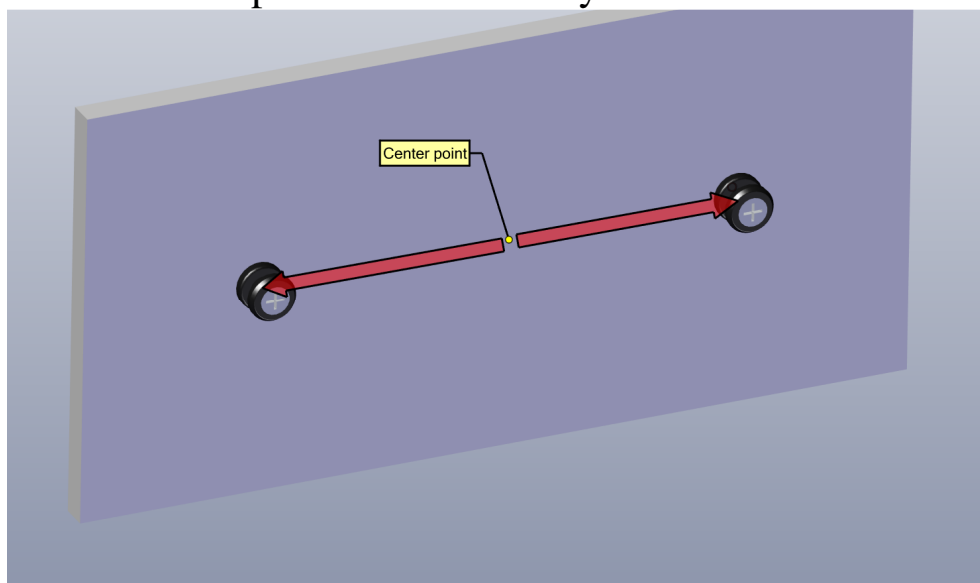


2; Mounting steps

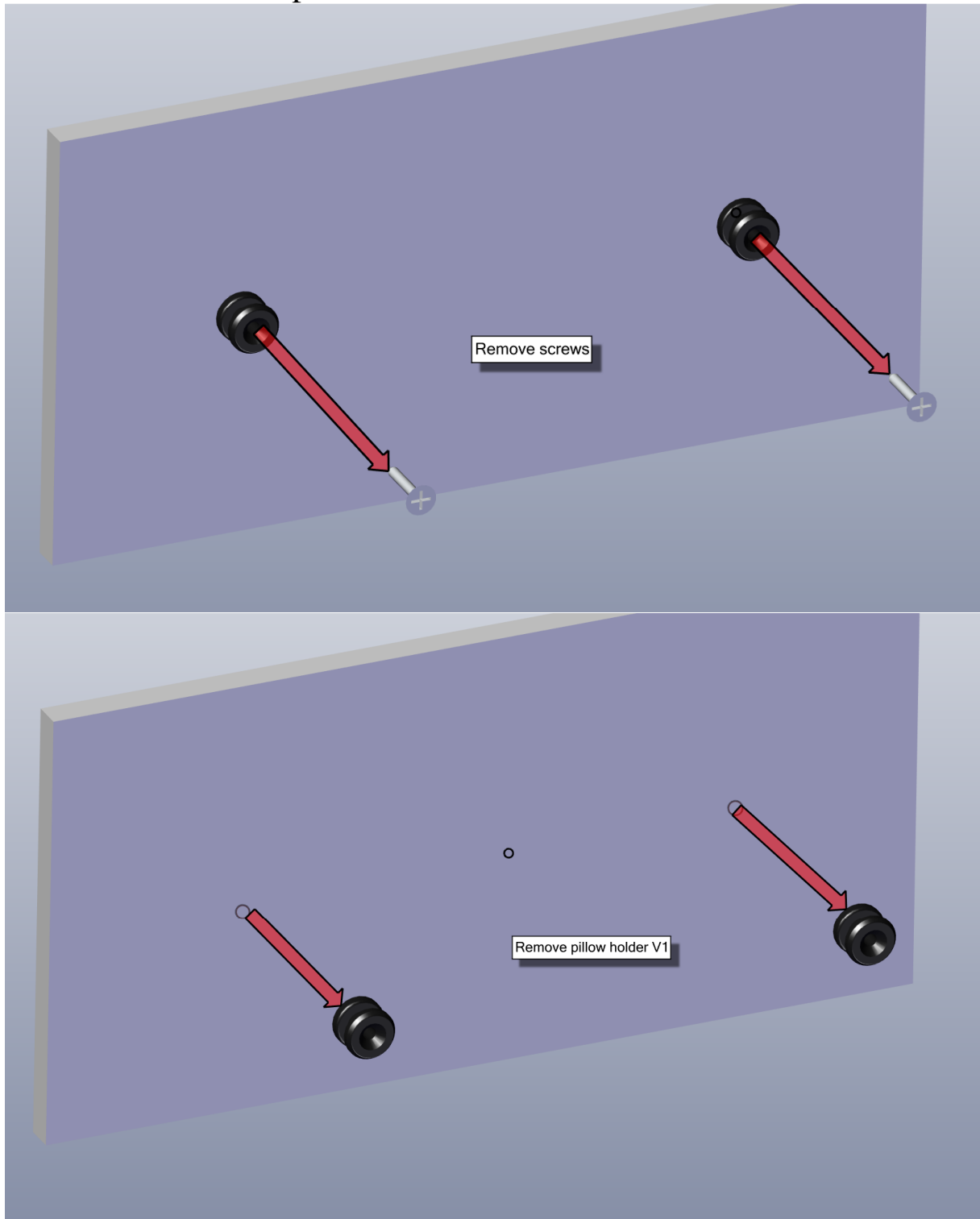
2.1; Measure the following dimensions: "A", "B", "C".



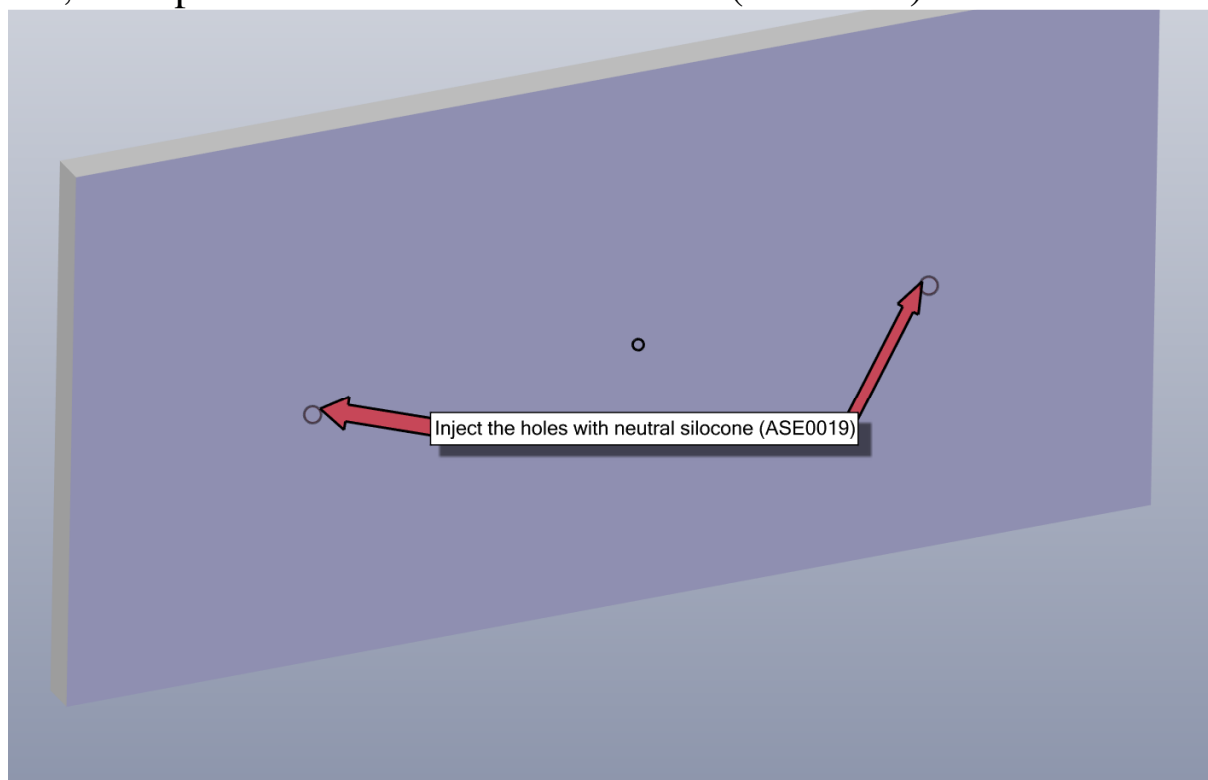
2.2; Mark the center point in horizontally.



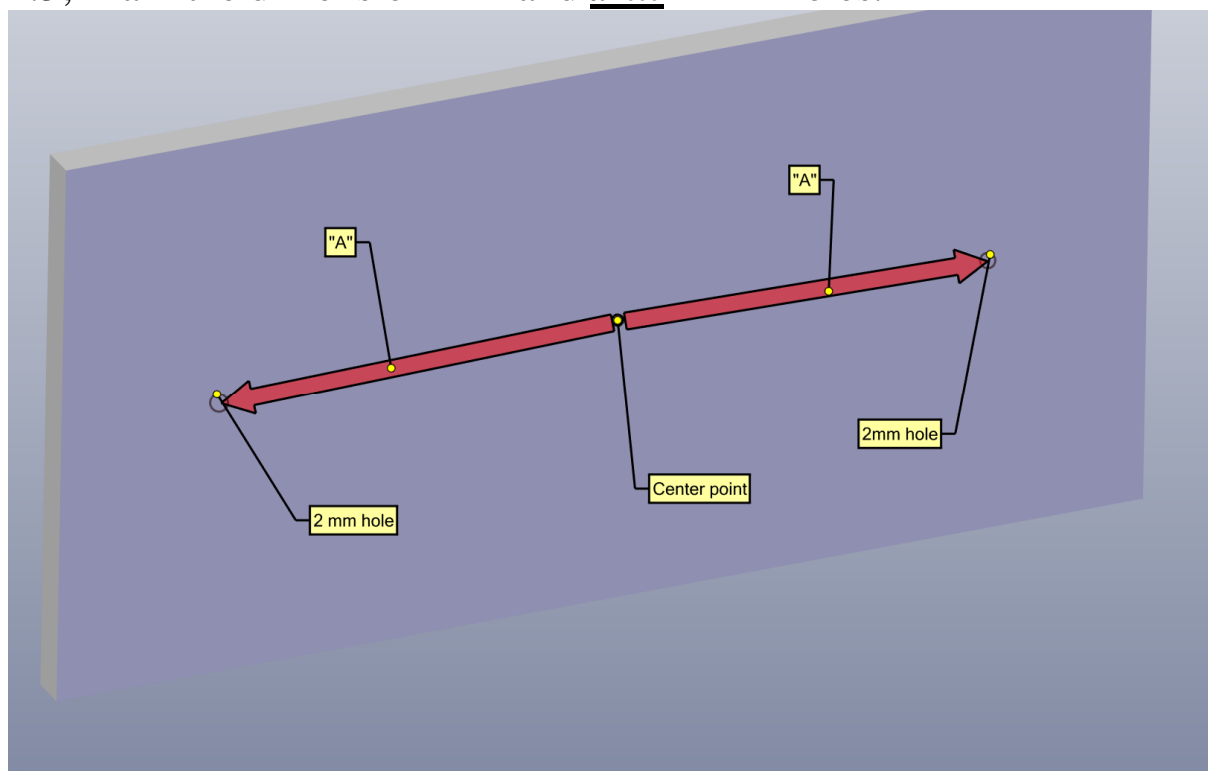
2.3; Remove the old pillow holder V1.



2.4; Fill up the holes with neutral silicone (ASE0019).



2.5; Mark the dimension "A" and drill 2 mm holes.



2.6; Mount the pillow holder V2 with the 2 pcs of 3.5x16 screws and adjust "B" and "C" dimension. Then ***drill*** the 2 mm holes and mount the pillow holder V2 with the remaining 4 pcs of 3.5x16 screws.

